

Flexible with intermittent and continuous print capabilities

Easy to use touch screen interface

Low cost of ownership using ribbon save technology

## Videojet DataFlex® Plus

Thermal Transfer Overprinter



Maximum reliability and efficiency for variable, high resolution images on flexible packaging and labels.

### Increased Production Line Uptime

A patented and proven clutchless ribbon drive with few wear parts increases mechanical reliability and minimizes maintenance-related downtime. Through the use of motors and software, optimal ribbon tension is consistently maintained, virtually eliminating downtime caused by ribbon breaks and false ribbon breaks.

- Simple ribbon cassette design and 1,000 meter ribbon length means less frequent and faster ribbon changes
- Increased production line efficiency

### Lowest Cost of Ownership

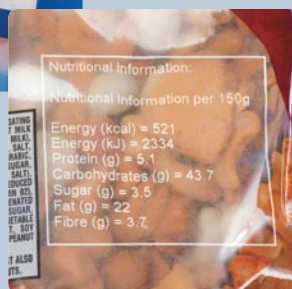


The DataFlex Plus is designed to lower the total cost of ownership. The patented bi-directional ribbon drive utilizes motors that drive both the ribbon unwind and re-wind reels, allowing unused ribbon to be recaptured after each print.

- 0.5mm gap between prints from the beginning to the end of the ribbon roll creates more prints per roll and ensures highest possible ribbon efficiency
- Bi-directional drive eliminates over-printing and provides consistent image quality
- Standard ribbon save functions are designed to further reduce ribbon expense and maximize the number of prints per roll



The Videojet DataFlex Plus Thermal Transfer Overprinter (TTO) delivers high resolution images on flexible packaging, while minimizing downtime and costs associated with ribbon breaks and production changeovers. For marking variable information such as date, time, batch code, ingredients, logos and marketing information onto flexible film packaging, labels or glossy cards, this system provides the ultimate in productivity and efficiency.



**Videojet DataFlex® Plus**  
Thermal Transfer Overprinter

## Maximum Flexibility



The DataFlex Plus has the built-in capacity to change between intermittent and continuous operation — quickly and easily — in the same unit. Software

flexibility can help reduce operator interaction, minimizing the potential for human error.

- Serial, Ethernet and USB communications deliver the most comprehensive communications package in the industry
- Control the printer unit directly from a host packaging unit's controller, or control up to four printer units from a single DataFlex Plus controller

## Protection in Harsh Environments

The DataFlex Plus is also available with an IP rating for the 53mm printer width model, offering an IP65-rated printer unit and IP55-rated graphical user interface (GUI) control unit.

- Enhanced protection against dust and water
- Ideally suited to hygienic packaging applications and washdown environments



## Easy to Learn and Use



The intuitive, high-resolution graphical user interface and color touchscreen incorporate easy to learn, icon-based controls and a WYSIWYG image display to

reduce downloading and entry errors.

- Three levels of password protection for added security
- On-board diagnostics make trouble shooting quick and easy, resulting in less downtime and reduced training requirements

## High Quality Thermal Transfer Printing

The DataFlex Plus system allows for on-line printing of variable and real-time data such as best by dates, times, batch/lot codes, ingredients listing, bar codes and logos with crisp, clear images.



- High-resolution images on a wide variety of flexible packaging, labels and other materials
- Well-suited for applications in the snack food, bakery, confectionery, frozen and refrigerated foods, bagged fresh vegetables and dried fruits, meats, coffee and pharmaceutical markets

**Printhead**

55 mm or 110 mm, 300dpi (12 dot/mm)

**Print Area**

**53 mm Unit**

Intermittent Printing Mode: 2.1" (53 mm) wide x 3.0" (75 mm) long (RH option) 2.1" (53 mm) wide x 2.7" (68 mm) long (LH option)  
Continuous Printing Mode: 2.1" (53 mm) wide x 5.3" (135 mm) long

**107 mm Unit**

Intermittent Printing Mode: 4.2" (107 mm) wide x 3.0" (75 mm) long (RH option) 4.2" (107 mm) wide x 2.7" (68 mm) long (LH option)  
Continuous Printing Mode: 4.2" (107 mm) wide x 7.9" (200 mm) long

**Minimum Print Speed**

**53 mm Unit / 107 mm Unit**

Intermittent Mode: 1.96 in./sec (50 mm/sec)  
Continuous Mode: 0 in./sec (0 mm/sec)

**Maximum Print Speed**

**53 mm Unit**

Intermittent Mode: 31.5 in./sec (800 mm/sec)  
Continuous Mode: 39.4 in./sec (1000 mm/sec)

**107 mm Unit**

Intermittent Mode: 27.5 in./sec (700 mm/sec)  
Continuous Mode: 31.4 in./sec (800 mm/sec)

**Printing Capabilities**

Full downloadable font support to Windows® TrueType® (including multiple languages and Unicode support); Fixed, variable and merged text fields; Flexible date/time formats; Flexible shift code formats; Auto best before date calculations and concession management; Auto incrementing/decrementing text, counters and bar codes; Multiple graphic formats supported (up to maximum print area); Link fields to databases; Scalable text and text blocks

**Bar Codes**

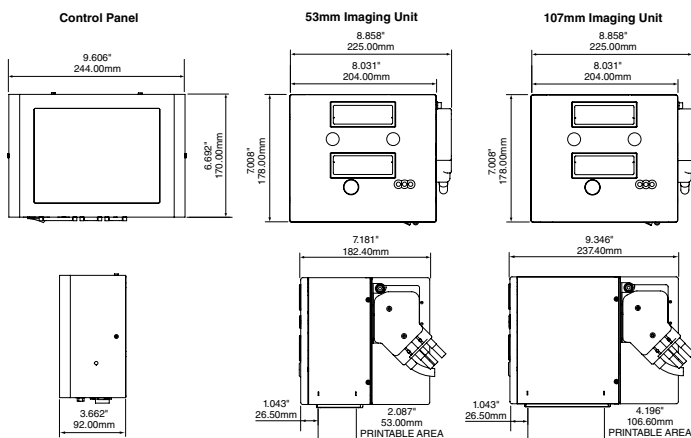
EAN 8, EAN 13, UPC-A, UPC-E, Code 39, EAN 128, Code 128, ITF, RSS (including 2D composite codes); others available upon request

**Operator Interface**

8.4-inch TFT SVGA (800x600) full-color LCD and touch screen, WYSIWYG print preview, Full on-board diagnostics, 3 levels of password protection, Extensive language support

**Ribbon Range**

Full assortment of wax / resin and resin inks



Dimensional drawings for IP-rated model are available upon request.

**Maximum Ribbon Length**

**53 mm Unit**

3,281 feet (1000 meters)

**107 mm Unit**

1,969 feet (600 meters)

**Ribbon Widths**

0.8" (20 mm) min, 4.3" (110 mm) max

**Nominal Ribbon Waste Between Successive Prints**

0.002" (0.5 mm)

**Ribbon Saving Features**

Radial ribbon save, interleaved ribbon save, intermittent ribbon save

**Power Supply**

90-264V

**Air Supply**

6 Bar. 90psi, uncontaminated 1.0ml/cycle (max)

**Operating Temperature**

41°-104°F (5°- 40° C)

**External Inputs**

3 PNP inputs

**External Outputs**

2 relay outputs and 2 PNP +24V outputs

**External Communications**

RS232, Ethernet, USB memory stick support, Binary and ASCII comms protocols and Windows drivers

**Remote Coder Configuration software**

CLARITY Configuration Manager  
"Off-line" set up and parameter storage available as standard

**Image Design Software**

CLARISOFT

**Network Management Software**

CLARINET

**Standard Installation Options Master / Slave Configuration**

Up to 4 DataFlex printers controlled via a single CLARITY control unit

**Web Browser Mode**

Remote control of the DataFlex Plus units from a host bagging system control box interface



800-843-3610  
www.videojet.com / info@videojet.com

Videojet Technologies Inc. / 1500 Mittel Blvd.  
Wood Dale IL 60191-1073 / USA  
Phone 630-860-7300 Fax 630-616-3623

